

Yesterday, Today, Tomorrow

DESIGN THAT BALANCES THE TRADITIONS OF
TRIBAL NATIONS WITH THEIR VISION FOR THE
FUTURE, FOSTERING A LEGACY OF PRIDE AND
PROSPERITY FOR GENERATIONS.



JCJARCHITECTURE



WHO WE ARE: FIRM PROFILE

WHO WE ARE

JCJ Architecture has built a practice that balances the business and art of design.

Founded in 1936, JCJ Architecture holds a continuous history of providing exceptional planning, architecture, interior design and documentation services for clients, nation-wide. With a portfolio rooted in community, cultural, K-12, mixed used, master planning, public safety, hospitality, historic restoration and adaptive reuse, JCJ has built a practice that unifies the art and business of design. Mastering this balance has connected our team's strategic planning and design efforts with client specific needs, creating delightful end-user experiences that are positioned to positively impact stakeholders, guests and communities.

As a 100% Employee Owned firm (ESOP), our collective team is supported by a business framework that gives freedom to creativity with a structured sense of purpose. This collective drive allows our team to engage directly with clients and stakeholders throughout the design process, keeping all team members informed and engaged from concept design through project completion.

Our seven offices work as a cohesive team to bring together the most effective knowledge base, outstanding team resources, and inspiration from individual creativity. Working together, our team adapts to each project and client to implement design and documentation strategies that directly support unique goals, timelines, and business objectives. We strive to live and practice in alignment with our mission statement: Design that Builds Community.

JCJARCHITECTURE

ESTABLISHED
1936

OWNERSHIP
Corporation

CONTACTS
Scott Celella,
CSI, LEED AP
President
T: 860.240.9306
E: sceella@jcj.com

James E. LaPosta Jr.,
FAIA, LEED AP,
Principal, Chief
Architectural Officer
T: 860.240.9326
E: jlaposta@jcj.com

Jeanne Muscolino,
NCIDQ, LEED AP
Principal | Hospitality
Sector Leader
T: 860.559.8243
E: jmuscolino@jcj.com

Emma Plagemann
Associate
T: 619.516.8862
E: eplagemann@jcj.com

LANGUAGE FLUENCY
English Spanish
French Italian
Korean Mandarin
Russian German
Polish Albanian
Hindi

OFFICE LOCATIONS
Boston
Hartford
Las Vegas
New York
San Diego
Phoenix
Tulsa

STAFFING
140 Total Staff
55 Registered Architects
30 LEED AP
7 Offices

RESOURCES/SERVICES
Master Planning
Pre-Design Feasibility and Planning
Existing Conditions Study
Needs Assessment
Project Management
Programming
Architecture
Interior Design / FF&E
Construction Administration
Renovation & Tenant Fitout
Historic Preservation
Visualization / Animation
Regulatory Approvals
Sustainable Design / Well@ Design
Graphic Design and Environmental Branding

AREAS OF EXPERTISE
Community
Cultural
Public and Private K-12
Higher Education
Public Safety and Justice
Non-Profit
Hospitality/Entertainment
Mixed-Use/Retail
Sports and Recreation
Corporate/Commercial



CHOCTAW NATION CULTURAL CENTER, DURANT, OK

WHO WE ARE: FIRM PROFILE

RECENT AWARDS & RECOGNITION

JCJ ARCHITECTURE/CORPORATE

- 2025, Hotel Business Magazine, #1 Top Arch and Designers
- 2025 & 2023, Interior Design Magazine, #8 Hospitality Giants
- 2024, Building Design + Construction, #5 Hospitality Arch
- 2024, NEWH Las Vegas, Top Interior Design Firm
- 2023 Oklahoma Magazine Top Firm, Commercial
- 2023 Engineering News Record, #32 Top Firms Southwest
- 2023 Engineering News Record, #344 Top 500 Design Firms
- 2023 Engineering News Record, #79, Top Green Design Firms
- 2022 AIA Connecticut, JEDI Award, Large Firm, Justice, Equity, Diversity & Inclusion Award
- 2022 New England AIA Components Emerging Professional Friendly Firm
- 2022 Building Design + Construction, #60 Top Architecture Firms (nationally)
- 2022 Building Design & Construction, #1 in Casino Architecture
- 2022 Building Design & Construction, #4 in Hospitality Architects
- 2022 Interior Design Magazine, #12 in Hospitality Giants
- 2022 Building Design + Construction, #61 K12 School Architecture Firms
- 2021 Interior Design Magazine, #10 in Hospitality Giants
- 2021 Building Design and Construction, Top 15 Casino Architecture
- 2020 Interior Design Magazine, #15 in Hospitality Giants
- 2020 Engineering News Record/New England, #5 Education
- 2019 Building Design Magazine, #14 Hospitality Giants
- 2019 Engineering News Record, #3 in Entertainment Design
- 2019 Hotel Business, #2 Top Architects and Designers
- 2019 Architectural Record, Featured in Top 4 Design Firms by Renovation Starts in the US
- Hartford Business Journal, #1 in Annual Ranking of the Largest Firms in Greater Hartford
- Metro Hartford Alliance/Hartford Business Journal, "Business Champion" award winner in categories of Business Growth and Sustainability

CASA BLANCA COMMUNITY SCHOOL

- 2022 AIA Eastern Oklahoma Honor Award, K12 Education
- 2022 AIA Eastern Oklahoma People's Choice Award in K12 Education
- 2022 AIA Arizona Distinguished Architecture Citation
- 2022 Boston Society of Architects K-12 Design Honor Award
- LEED Certification - pending / Silver in process

CHOCTAW RESORT EXPANSION

- 2021 AIA Eastern Oklahoma People's Choice Award in Large Commercial Architecture

MLK CAMPUS

- 2023 AIA Connecticut/Connecticut Preservation, Elizabeth Mills Brown Award
- 2022 AIA Connecticut Design Merit Award, Interior Architecture
- 2022 Retrofit Metamorphosis Award, 3rd place whole building category
- 2022 Preservation Connecticut Award of Merit
- 2021 Connecticut Building Congress Project Team Award of Merit

SOUTH END BOYS & GIRLS CLUB OF HARTFORD

- 2022 Connecticut Building Congress Project Team Awards, First Place - Large Civic Projects
- 2022 CT CREW, Community Impact Award

GOODWIN UNIVERSITY, MAIN STREET MIXED USE

- 2020 CT CREW, Best in Class: Commercial

BARACK H. OBAMA

MAGNET UNIVERSITY SCHOOL

- 2020 AIA Connecticut Design Merit Award

MILL RIVER PARK DISCOVER CENTER

- 2019 AIA Connecticut Unbuilt Design Excellence Award

Fairchild Wheeler Multi-Magnet High School

- 2016, Association for Learning Environments

SELECT LIST OF TRIBAL CLIENTS

AGUA CALIENTE BAND OF CAHUILLA INDIANS	MOHEGAN TRIBE
BEAR RIVER	MUSCOGEE NATION
BISHOP PAIUTE TRIBE	NAVAJO NATION OF INDIANS
BLACKFEET NATION	NOTTAWASEPPI HURON BAND OF POTAWATOMI
BLUE LAKE RANCHERIA TRIBE	OSAGE NATION
CHEHALIS TRIBE	OTOE-MISSOURIA TRIBE OF INDIANS
CHEROKEE NATION	PALA BAND OF MISSION INDIANS
CHEYENNE AND ARAPAHO TRIBES	PAMUNKEY INDIAN TRIBE
CHICKASAW NATION	PASKENTA BAND OF NOMLAKI INDIANS
CHIPPEWA INDIANS	PASQUA YAQUI TRIBE
CHITIMACHA TRIBE OF LOUISIANA	PAWNEE NATION OF OKLAHOMA
CHOCTAW NATION OF OKLAHOMA	PAUMA BAND OF LUISEÑO INDIANS
CITIZEN POTAWATOMI NATION	PECHANGA BAND OF INDIANS
CLOVERDALE RANCHERIA OF POMO INDIANS	PIT RIVER TRIBE
COMANCHE NATION	PONCA TRIBE OF OKLAHOMA
DELAWARE TRIBE OF INDIANS	PUEBLO OF ISLETA
EASTERN BAND OF CHEROKEE INDIANS	PUEBLO OF SANTA ANA
GILA RIVER INDIAN COMMUNITY	PUEBLO OF SANTA CLARA
GRAND TRAVERSE BAND OF OTTAWA & CHIPPEWA INDIANS	PUEBLO OF TESUQUE
HABEMATOLEL POMO OF UPPER LAKE	PUYALLUP TRIBE OF INDIANS
HOPI TRIBE	QUAPAW TRIBE OF OKLAHOMA
HUALAPAI TRIBAL NATION	QUINAULT INDIAN NATION
IOWA TRIBE	ROSEBUD SIOUX TRIBE
JAMUL INDIAN VILLAGE	SAC & FOX NATION
JICARILLA APACHE NATION	SAGINAW CHIPPEWA INDIAN TRIBE
KANESATAKE FIRST NATION	SAN PASQUAL BAND OF MISSION INDIANS
KICKAPOO TRADITIONAL TRIBE OF TEXAS	SANTA CLARA PUEBLO
KICKAPOO TRIBE OF OKLAHOMA	SANTA YNEZ BAND OF CHUMASH INDIANS
KIOWA TRIBE OF OKLAHOMA	SEMINOLE TRIBE OF FLORIDA
LA JOLLA BAND OF LUISEÑO INDIANS	SENECA NATION OF INDIANS
LUMMI NATION	SQUAXIN ISLAND TRIBE
MASHANTUCKET PEQUOT TRIBAL NATION	ST. REGIS MOHAWK TRIBE
MASHPEE WAMPANOAG TRIBE	SYCUAN BAND OF THE KUMEYAAY NATION
MATCH-E-BE-NASH-SHE-WISH	TABLE MOUNTAIN RANCHERIA
BAND OF POTTAWATOMI, GUN LAKE TRIBE	THLOPTHLOCCO TRIBAL TOWN
MENOMINEE INDIAN TRIBE OF WISCONSIN	TOHONO O'ODHAM NATION
MESCALERO APACHE TRIBE	VIEJAS BAND OF KUMEYAAY INDIANS
	YUHA AVIATAM OF SAN MANUEL NATION



DESIGN FOR SOVEREIGN NATIONS

Certain things catch your eye,
but pursue only those that capture your heart.

UNKNOWN

JCJ's commitment to Tribal communities is long standing and unwavering. Our work in Indian Country began in the early 1990's as Architect for the Mashantucket Pequot Tribal Nation's Foxwoods Resort Casino. Since that time, our work has diversified to many project typologies and our relationships have deepened to include more than 85 Tribal Nations. Today our portfolio reflects experience with a wide variety of facilities ranging from cultural centers, museums and archival repositories; schools and early childhood education facilities; community and wellness centers; police and justice facilities; RV parks, convenience stores and campgrounds; and gaming, hospitality and entertainment destinations.

While each project fulfills a distinctive set of needs, the common thread is JCJ's fully-engaged design approach. The results are representative of our ability to successfully address objectives and challenges while integrating defined aspects of Native history, language, traditions, story-telling, art and culture.

We acknowledge the positive impact that the built environment can have on a Tribe's social, cultural and financial health, and we work closely with each of our clients to create and deliver a legacy of success for future generations.



GILA RIVER INDIAN COMMUNITY GILA CROSSING SCHOOL, LAVERN VILLAGE, AZ



DESIGN FOR LEARNING

Let us put our minds together and see what life we can make for our children.

SITTING BULL (THATHANJKA IYOTAKE) – HUNKPAPA LAKOTA SIOUX

EXPANDED EDUCATION PORTFOLIO:



GILA RIVER INDIAN COMMUNITY GILA CROSSING SCHOOL, LAVERN VILLAGE, AZ
GILA RIVER INDIAN COMMUNITY CASA BLANCA COMMUNITY SCHOOL, BAPCHULE, AZ

JCJ Architecture has worked extensively with clients at the PreK-12 and collegiate levels. Our professionals understand the unique circumstances and needs of school facilities and have dedicated their careers to developing environments that promote opportunities for learning and collaboration.

The firm has worked with several Tribal Nations, from master planning and project formulation all the way through to construction and completion. Through the design of educational spaces that inspire and encourage creativity, we believe we are also creating places that promote a sense of belonging and wider sense of community.



GILA RIVER INDIAN COMMUNITY GILA CROSSING COMMUNITY SCHOOL, LAVERN VILLAGE, AZ



DESIGN FOR SUSTAINABILITY

Mother Earth is not a resource,
she is an heirloom.

DAVID IPINA – YUOK TRIBE



ABOVE: GILA RIVER INDIAN COMMUNITY GILA CROSSING COMMUNITY SCHOOL, LAVERN VILLAGE, AZ
BELOW: SENECA NATION OF INDIANS CATTARAUGUS EARLY CHILDHOOD LEARNING CENTER

JCJ is committed to integrating sustainable design principles into our projects and bringing the latest solutions to our clients. Continuous learning is the foundation to our team's success when tackling the expectation of minimizing environmental footprint for projects.

We work side-by-side with our clients to provide a comprehensive suite of sustainable design services encompassing climate, resiliency and human health.



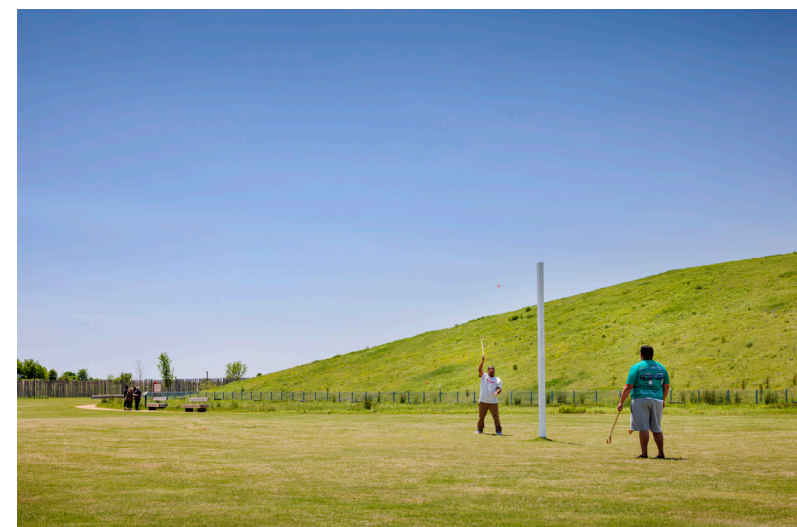
CHOCTAW NATION WELLNESS CENTER, DURANT, OK



DESIGN FOR COMMUNITY & WELLNESS

In any great undertaking it is not enough for a man to depend simply upon himself.

LONE MAN (ISNA-LA-WICA) – TETON SIOUX



ABOVE: CHOCTAW NATION WELLNESS CENTER, DURANT, OK
BELOW: CHOCTAW NATION CULTURAL CENTER, DURANT, OK

With more than 80 years of professional practice, JCJ Architecture is committed to design that serves people, communities and the environment. We believe architecture sits at the crossroads of the arts and society and in our ability to strengthen communities, safeguard resources and preserve landscapes.

We aim to forge deep connections with the communities we serve, fostering environments that meet the current needs of the people while proactively addressing the challenges of the future.



CHOCTAW NATION CULTURAL CENTER, DURANT, OK



DESIGN TO CELEBRATE CULTURE

Even though they had forgotten who they were, somewhere inside of them the gift of their ancestors remained.

NATIVE AMERICAN WISDOM KEEPER

EXPANDED CULTURAL DESIGN PORTFOLIO:



CHOCTAW NATION CULTURAL CENTER, DURANT, OK
EXHIBIT DESIGN AND CURATION OF ARTIFACTS: DESIGN DIVISION, INC AND PRESERVATION CULTURAL HERITAGE

Among the projects JCJ has been the most privileged to undertake for Native American clients are Cultural Centers, Archives and Repositories.

We have worked to implement planning principles and design strategies that support Tribal uses and create exciting places to engage Non-Tribal audiences. We have worked with some of the foremost consultants on projects that focus on study and conservation of artifacts, the perpetuation of language and heritage, and the sharing of a historical and cultural perspectives.



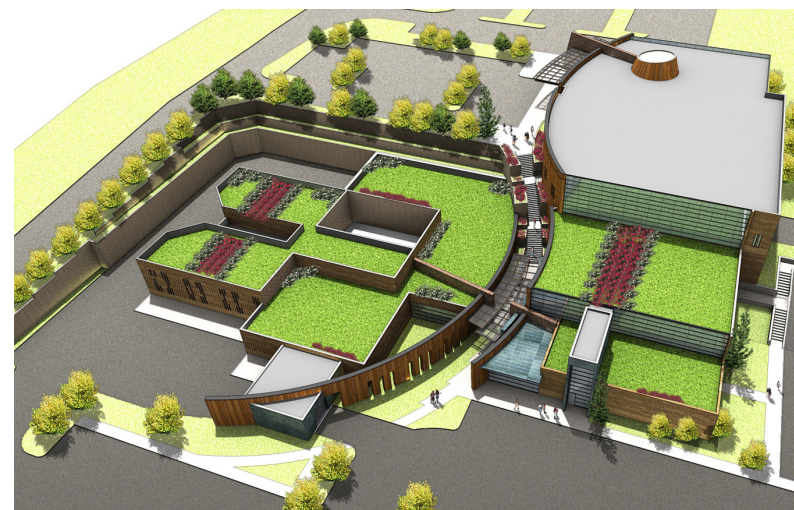
NAVAJO NATION JUSTICE CENTER, TUBA CITY, AZ



DESIGN FOR RESTORATIVE JUSTICE

In our every deliberation, we must consider the impact of our decisions on the next seven generations.

IROQUOIS CONFEDERACY MAXIM



ABOVE: PUYALLUP TRIBE OF INDIANS JUSTICE CENTER, TACOMA, WA

JCJ Architecture has an extensive background in the planning and design of public safety, corrections and courts facilities across the United States.

JCJ has been intimately involved in project definition as well as with the process of collaborating with and securing federal funding through the BIA for Tribal justice projects. Our wide ranging experience has enabled JCJ to develop an appropriate approach to addressing the needs of mission-critical operations. We focus on designing facilities that function efficiently, provide a healthy work environment and create a direct benefit to the communities they serve.



CHOCTAW NATION RESORT AND CASINO EXPANSION , ARCHITECTURE AND INTERIOR DESIGN BY JCJ ARCHITECTURE



DESIGN FOR ECONOMIC DEVELOPMENT

Luck is what happens when
preparation meets opportunity.

LUCIUS ANNAEUS SENECA



ABOVE: TOHONO O'ODHAM NATION FAR WEST CASINO, MARICOPA COUNTY, AZ
BELOW: CHOCTAW NATION RESORT AND CASINO EXPANSION, DURANT, OK

JCJ Architecture has worked with Tribes on gaming and hospitality projects since the early 1990s. Beginning with design of Foxwoods Resort Casino thru to the current day, JCJ has been at the forefront of the establishment of Indian Gaming as an engine of economic self-determination.

Our extensive background includes projects at every scale - from short and long-term master plans, modest renovations and expansions, to the realization of new resort destinations. The JCJ team brings exceptional collective intelligence of the market and trends in hospitality. Our design work tells our clients' stories, heightens the guest experience and promotes bottom line success.



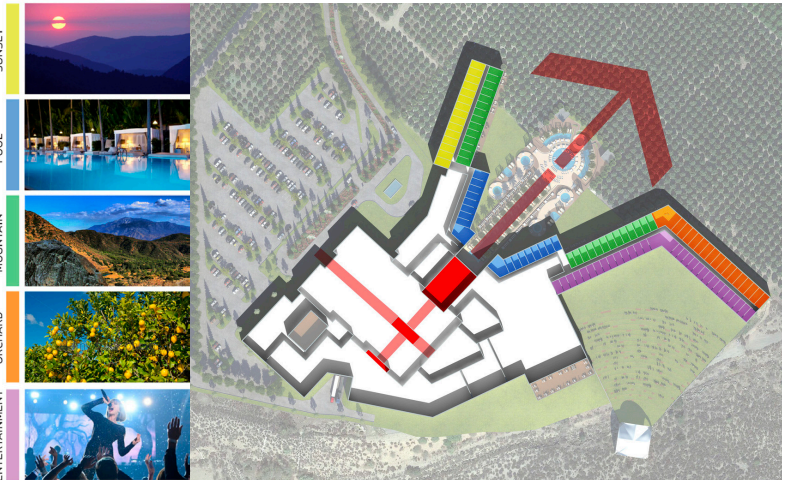
MIXED USE DEVELOPMENT MASTER PLAN, USA



DESIGN FOR THE FUTURE

We do not inherit the earth from our ancestors,
we borrow it from our children.

ANCIENT AMERICAN INDIAN PROVERB



PAUMA BAND OF LUISEÑO INDIANS CASINO PAUMA, PAUMA VALLEY, CA

JCJ Architecture's approach to the master planning process is holistic and integrated, beginning with developing an understanding around objectives, context, intended uses, economic factors, ecology and market forces.

By their very nature, master plans need to provide a road map for sustainable future growth. We model our master planning to address current conditions while building in the flexibility to adapt to potential changes in community, climate, technology, energy, and land use.



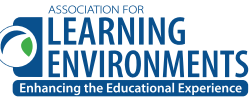
EDUCATION EXPERIENCE

PARTIAL LIST OF K-12 SCHOOLS

Chámmakilawish Tribal School TEMECULA, CA	World Of Inquiry K-12 School ROCHESTER, NY	Barak H. Obama Pre K-4 Magnet University School NEW HAVEN, CT
Noli Indian School Master Plan SAN JACINTO, CA	Kent Place School SUMMIT, NJ	Caleb Dustin Hunking K-8 School HAVERHILL, MA
Casa Blanca Community School BAPCHULE, AZ	The Craig School MOUNTAIN LAKES, NJ	Saxe Middle School NEW CANAAN, CT
Gila Crossing Community School LAVEEN VILLAGE, AZ	Elisabeth Morrow School ENGLEWOOD, NJ	Bishop Woods K-8 School NEW HAVEN, CT
Seneca Arts and Learning Center SENECA NATION, NY	Saddle River Day School SADDLE RIVER, NJ	Manchester Memorial Pk-5 Elementary MANCHESTER-BY-THE SEA, MA
Success Academy Old Bronx Borough Courthouse BRONX, NY	Cheshire Academy CHESHIRE, CT	Brich Grove Primary Pk-2 School TOLLAND, CT
<div>270+ SCHOOL PROJECTS SINCE 2000</div>		
Democracy Prep Public Charter School HARLEM, NY	Choate Rosemary Hall WALLINGFORD, CT	Goodwin University CT River Academy Manufacturing EAST HARTFORD, CT
AECI Charter Schools BRONX, NY	Marianapolis Preparatory THOMPSON, CT	William H. Hall High School WEST HARTFORD, CT
GEMS Americas: Manhattan NEW YORK, NY	Columbia Independent School COLUMBIA, MO	John F. Kennedy Middle School ENFIELD, CT
Park Avenue Christian Church Day School NEW YORK, NY	Enfield Montessori School ENFIELD, CT	49 Campus Technology Upgrades SDUSD - SAN DIEGO, CA
French American Institute School Of Manhattan NEW YORK, NY	Martin Luther King Campus HARTFORD, CT	32 Campus HVAC Upgrades SDUSD - SAN DIEGO, CA
Storm King School CORNWALL-ON-HUDSON, NY	Fairchild Wheeler Magnet High School BRIDGEPORT, CT	Keillor Elementary Full Site Modernization SAN DIEGO, CA
	Marine Science Magnet High School GROTON, CT	LAUSD Elizabeth Learning Center LOS ANGELES, CA
		University High School Labs And Upgrades LOS ANGELES, CA

NATIONALLY RECOGNIZED

Leaders in the national conversation about design for education.



JCJ has worked with the American Architectural Foundation's Design for Learning initiative. Funded by the Bill and Melinda Gates Foundation, the AAF has collaborated with districts across the country, engaging administrators and teachers in reimagining how existing spaces could be altered to more effectively support personalized learning.

We have also worked with the National Design Alliance and their Reimagine America's Schools program to support approaches to design that help promote personalized learning and next generation skills development.



- JCJ OFFICES
- DESIGN FOR LEARNING LOCATIONS



EXPERIENCE

BEYOND ACCESSIBILITY UNIVERSAL DESIGN FOR LEARNING

JCJ has been designing schools based on Universal Design for Learning (UDL) principles for many years.

JCJ has been designing schools based on Universal Design for Learning (UDL) principles for many years. UDL is about meeting design that meets the needs of all learners, including learners with disabilities, and to consider their needs from a physical, educational, social and emotional perspective.

Our approach to designing spaces for all students, and especially students with disabilities, begins with understanding existing practices and standards with a District and expectations and needs within a school and specific age group. To maximize opportunity and access for all students, principles at the forefront of consideration include equitable, simple and intuitive use; flexibility in use; low physical effort; and size and space characteristics appropriate for approach and use. The team will look to provide a variety of spaces within a school, classroom, common areas and outdoor spaces to accommodate active learning, mindfulness, relaxation and de-escalation. This variety can be achieved through the use of scale, providing break out spaces, providing sensory pathways throughout, with furniture which provides different levels of comfort and engagement, and lighting which can be dimmed in different portions of the room and auditory devices that manages sound levels in classroom spaces .

Using the principles of UDL, JCJ looks to maximize accessibility for all learners and to design spaces that promote flexibility and inclusion. The team endeavors to create agile and adaptable spaces that accommodate differing learning and teaching styles. These UDL principles include: .

- **ENGAGEMENT** - The “why” of learning
providing a mix of structure and flexibility, creating concepts for students that can support their individualized learning styles, creating adaptability. Different types of furniture, various shaped desks that can easily move to create different settings from individual to small group or large group. A classroom might have standard student chairs, chairs that look the same but rock for students who need more movement, and soft seating for those who need quiet places to relax and focus;
- **REPRESENTATION** - The “what” of learning
Learners comprehend in different ways; some process through visual or auditory learning, others lecture or reading. Spaces need to respond to these needs and assist those in these various modes of learning in order to benefit all learners. Accessible technology, and sound amplification systems are examples of how to support differentiated learning;
- **ACTION & EXPRESSION** - The “how” of learning
Learners feel comfortable and excited when they can express themselves in their own ways. Those expressions can be shown through physical or hands-on activities. Providing spaces like maker or creation spaces and flexible multi-use environments allow students to express themselves through actions like dance, music or creation all support these student needs;

AN Immersive CULTURAL EXPERIENCE



BOSTON SOCIETY OF ARCHITECTURE
HONOR AWARD, K12 DESIGN



AIA EASTERN OKLAHOMA
HONOR AWARD FOR DESIGN;
PEOPLES CHOICE AWARD, K12

AIA ARIZONA
DISTINGUISHED ARCHITECTURE CITATION

CASA BLANCA COMMUNITY SCHOOL

GILA RIVER INDIAN COMMUNITY

BAPCHULE, ARIZONA

JCJ ARCHITECTURE



Casa Blanca Community School Gila River Indian Community

BAPCHULE, ARIZONA



The campus provides an immersive cultural experience, helping to preserve the languages, stories and traditions of the tribes.

This Pre K-6 school serves children and families from Districts 3, 4 and 5 of the Gila River Indian Community. It is surrounded by cultivated farmland and in a region which has historically been the agricultural hub for the Akimel O'otham (Pima) and Pee Posh (Maricopa) peoples. The campus provides an immersive cultural experience, helping to preserve the languages, stories and traditions of the tribes.

The layout of the campus takes inspiration from the agricultural fields that sustained the Akimel O'otham and Pee Posh and the canals they were so skilled in constructing. Classroom cluster and core/community buildings are organized around a central ribbon of green space. The campus includes indoor and outdoor commons areas that provide each grade level cluster a space for flexible instruction.

On the western edge of the campus is an integrated Agriculture-Cultural Arts-Language-Applied Arts building. This building supports an exciting and immersive program bringing together the practical, scientific, historical and cultural underpinnings of agriculture. To celebrate water several features have been designed to connect students to the life sustaining cycle of rain and renewal.

In addition to a dedicated sensory classroom, playgrounds and all campus buildings are designed in alignment with Universal Design in Education principles and support inclusive experiences for all members of the school community. Working with a select group of parents and elders, the project incorporates a robust artwork program that expresses the creativity, ingenuity, culture and traditions of the Community.

102,400 sf
NEW CONSTRUCTION

586
Students
GRADES PRE K-6

Confidential
PROJECT COST

2021
COMPLETION

LEED Silver
PENDING

JCJARCHITECTURE



Casa Blanca Community School Gila River Indian Community

BAPCHULE, ARIZONA



Fast Tracking

A PATH TO KNOWLEDGE

GILA CROSSING COMMUNITY SCHOOL

GILA RIVER INDIAN COMMUNITY

LAVEEN VILLAGE, ARIZONA

JCJ ARCHITECTURE



Gila Crossing Community School Gila River Indian Community

LAVEEN VILLAGE, ARIZONA



The design of the campus was developed from the concept of a running river, bringing life and knowledge to each piece of program.

Gila Crossing Community School is a Pre-K through 8 school, designed for the Gila River Indian Community. The school was a fast-tracked, ground-up, design-build project that was completed in 11 months. Having worked with the Gila River Indian Community on multiple past projects, such as the Vee Quiva Casino, Wild Horse Pass Casino and Hotel, and planning for the Community's Police Headquarters, our design team was prepared to address and accomplish cultural and design initiatives in the short design-build time frame.

The design of the campus was developed from the concept of a running river, bringing life and knowledge to each piece of program, connected through a series of exterior courtyards and a meandering, tree-lined path.

The elementary school and middle school have been designed with their own, age appropriate interior and exterior spaces, and both groups share common areas that include gymnasium, dining hall and library.

A cultural and educational asset to the Gila River Indian Community, this school celebrates the living culture of the Pee-Posh and Akimel O'otham peoples. Athletic facilities and shade structures accommodate the students physical needs alongside the climate of the Arizona desert landscape. Details such as pottery and basket weaving patterns have been incorporated into brickwork and the project incorporates an extensive artwork program from Gila River Community Members.

124,406 sf
NEW CONSTRUCTION

734 Students
GRADES PRE K – 8

\$39 Million
CONSTRUCTION COST

2019
COMPLETION

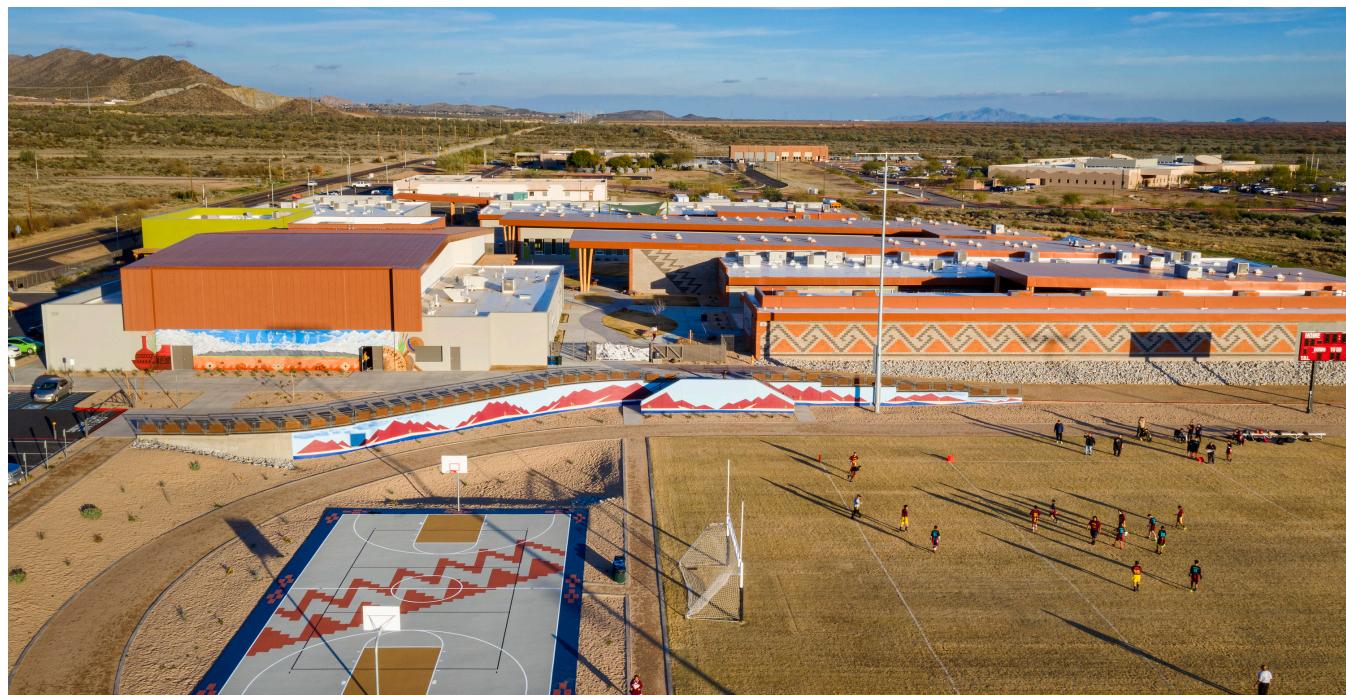
LEED Silver
CERTIFICATION



Gila Crossing Community School Gila River Indian Community

LAVEEN VILLAGE, ARIZONA

A cultural and educational asset to the Native American community, this school celebrates the agriculture, technology and language of the Gila River Indian Community.





PECHANGA CHÁMMAKILAWISH TRIBAL SCHOOL

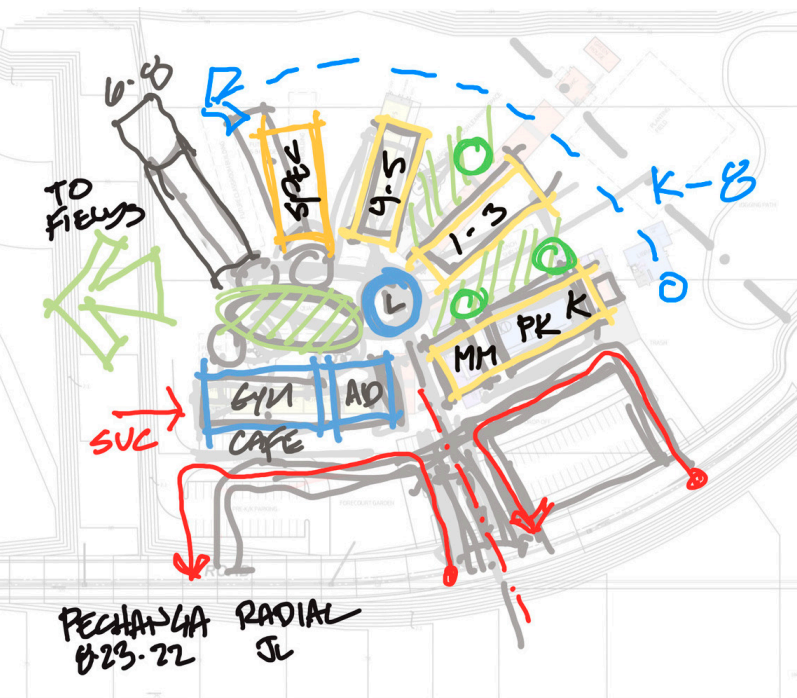
TEMECULA, CALIFORNIA

JCJARCHITECTURE



Pechanga Chámmakilawish Tribal School

TEMECULA, CALIFORNIA



The design for the Pechanga Chámmakilawish Tribal School is the outcome from a series of working sessions with Tribal Council and Tribal Members, the Cultural Committee, and representatives from the existing school. Through these sessions, our team at JCJ helped the Tribe to identify descriptive words such as, unique, inspiring, flexible, collaborative, exciting and visionary, to be the driving design force prior to programming. From this collective inspiration, a building program for the school was developed, inclusive of 39,000 sf with standard and speciality classroom space, administrative offices, a library, and a dual-purpose cafeteria and gymnasium.

Design concepts, on both the interior and exterior, were established through a careful study of the surrounding landscape, wildlife, traditional arts and language. Celebrating the Pu'éska Mountain, a sacred range whose name translates to 'where the rocks cry', the building placement and details within the school allow students the opportunity to connect with their ancestry and traditions while attending school at a new state-of-the-art facility.

39,000 sf
NEW CONSTRUCTION

Confidential
PROJECT COST

2025
COMPLETION



Pechanga Chámmakilawish Tribal School
TEMECULA, CALIFORNIA

JCJ helped the Tribe to identify descriptive words such as, unique, inspiring, flexible, collaborative, exciting and visionary, to be the driving design force prior to programming.



Consolidating

MANY SERVICES UNDER ONE ROOF



SENECA ARTS AND LEARNING CENTER
SENECA NATION OF INDIANS
ALLEGHENY TERRITORY, NEW YORK

JCJ ARCHITECTURE



Seneca Arts and Learning Center Seneca Nation of Indians

The building was designed to help the Nation to capitalize on the benefits of having all of these services consolidated under one roof.



JCJ Architecture's strong relationship with the Seneca Nation, and successful work with the Tribe at the Seneca Early Childhood Learning Center led to this adaptive re-use project in Salamanca. The design transforms the existing, previously closed Seneca Elementary School building into a "multi-generational Seneca learning center."

The building accommodates an Early Childhood Learning Center in addition to the Nation's education administration offices, a language and cultural center, museum collections and archives and a Center for Business Growth. The building was designed to help the Nation to capitalize on the many benefits of having all of these services consolidated under one roof.

The new facility eliminates the waiting list for children to gain access to the Early Childhood Learning Center. As a true Center for Arts & Learning, the programs within the building take advantage of the approximately 10 acre site. There are plans to include a garden, walking trails through a forested area and a ball field. The Pennsy Trail, a converted railbed used for hiking, biking, walking and running, is located directly behind the school property.

61,000 sf
ADAPTIVE REUSE

400 Students
**AGES 6 WEEKS –
13 YEARS**

\$10 Million
PROJECT COST

2016
COMPLETION

SENECA CULTURE IS
Integrated
INTO THE DESIGN



EARLY CHILDHOOD LEARNING CENTER

**EARLY CHILDHOOD
LEARNING CENTER**

SENECA NATION OF INDIANS

CATTARAUGUS TERRITORY, NEW YORK

JCJ ARCHITECTURE



Early Childhood Learning Center

SENECA NATION OF INDIANS, CATTARAUGUS TERRITORY, NEW YORK

The facility serves as a center for childhood development, education, health services, and cultivation of the Seneca language and traditions.



The Seneca Nation's Cattaraugus Early Childhood Learning Center (ECLC) is a family oriented program with goals applying to students, families and the community. The new building on the Cattaraugus Reservation serves a growing population of children between the ages of 6 weeks and 13 years. The 400 student capacity is anticipated to meet growth for the next twenty years. The facility serves as a center for childhood development and education, health services, and cultivation of the Seneca language and traditions. Existing programs (Daycare, Head Start and After School) have been retained and enhanced while two additional programs, Seneca Education and Seneca Language are accommodated. Community involvement is critical to the Nation, and joint uses

are accommodated as much as practical in terms of retaining safety and the identity of the early childhood programs.

Seneca culture is integrated into the design as a reflection of the Nation's proud and rich history and to enhance learning opportunities for the programs within. The school's "Food is our Medicine" project, a partnership between the Seneca Nation of Indians and the Seneca Diabetes Foundation is also promoted in the design of interior spaces. All landscape plantings are exclusively comprised of local indigenous species in compliance with newly enacted Seneca Nation of Indians policy. A variety of sustainable design considerations have also been incorporated into the project where feasible.

64,000 sf
NEW CONSTRUCTION

400 Students
AGES 6 WEEKS –
13 YEARS

\$20 Million
PROJECT COST

2016
COMPLETION

Support Services

EDUCATION AND RECREATIONAL SERVICES
FOR MIDDLE AND HIGH SCHOOL STUDENTS

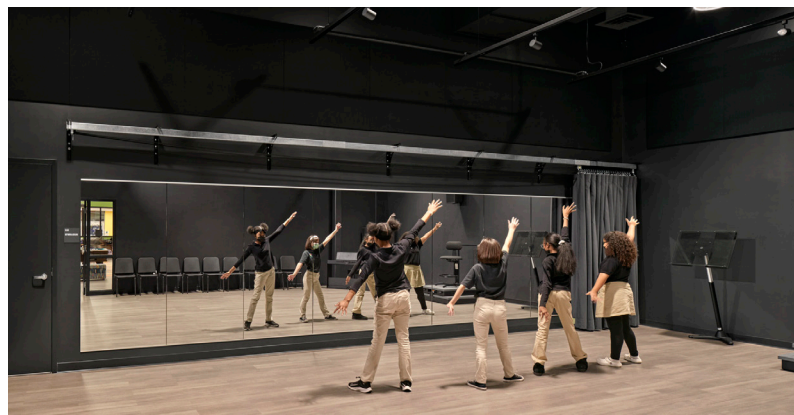
BOYS & GIRLS CLUB OF HARTFORD
SOUTH END
HARTFORD, CT

JCJ ARCHITECTURE



Boys & Girls Club of Hartford South End

HARTFORD, CONNECTICUT



The B&GC of Hartford saw a need in the south end of Hartford for a new facility that could bring education and recreational support services to middle and high school students.

JCJ's relationship with the Boys & Girls Club (B&GC) goes back decades. It's an institution that impacts communities nationally but was started in 1860 by three women who believed that boys roaming the streets needed a positive alternative. The B&GC of Hartford saw a need in the south end of Hartford for a new facility that could bring education and recreational support services to middle and high school students.

The City of Hartford offered land adjacent to the Alfred E. Burr Middle School within the Hartford School District. JCJ supported the B&GC by facilitating conversation between the B&GC, the Hartford School District and the City of Hartford, as well as provided site feasibility. We then proceeded with programming, regulatory approvals,

design and documentation. The new B&GC facility includes classrooms inclusive of a Homework room, Technology room, TV/Recording Room, Art Room, and Performing Arts room; in addition to the Games Room and Gymnasium. A Community Room is available for both B&GC activities or open to the public during off hours.

Additionally, JCJ is fortunate to have worked with a CM that embraced a highly collaborative approach to managing the budget. Understanding that with every dollar saved on the building construction, another child can be served at the Club, BBE and JCJ were proactive in reaching out to resolve Value Engineering items. This has allowed the team to maintain integrity with the interiors and continuity on design of the building.

26,000 sf
NEW CONSTRUCTION

\$10.5 Million
CONSTRUCTION COST

2021
COMPLETION

JCJARCHITECTURE

Dual Purpose

PRIMARY SCHOOL
& LAB SCHOOL



**BARACK H. OBAMA
MAGNET UNIVERSITY SCHOOL**

NEW HAVEN, CONNECTICUT

JCJ ARCHITECTURE



Barack H. Obama Magnet University School
NEW HAVEN, CONNECTICUT

The design provides a layout tailored to the unique program requirements of a “lab school,” and develops a deeper connection with SCSU.



JCJ Architecture and Pickard Chilton provided design services for the new Barack H. Obama Magnet University School, located on the campus of Southern Connecticut State University (SCSU). This new school is part of the New Haven Public School District with 490 students from Pre-K through 4th grade. It has been designed for use by SCSU’s School of Education as a “lab school” for college and graduate students preparing to be teachers.

The design delivers state-of-the-art technology and learning environments, provides a layout tailored to the unique program requirements of a “lab school,” and develops a deeper connection with SCSU. Guiding design principles were that it: captures daylight to create positive learning environments; embraces the forest to engage students with nature; respects and engages its neighborhood; and, synergizes with SCSU.

63,000 sf
NEW CONSTRUCTION

490 Students
GRADES PREK-4

\$32.5 Million
CONSTRUCTION COST

2019
COMPLETION

Renovation

TO ADDRESS CRUMBLING
FOUNDATIONS

BIRCH GROVE PRIMARY SCHOOL

BIRCH GROVE PRIMARY SCHOOL

TOLLAND, CONNECTICUT

ICJ ARCHITECTURE



Birch Grove Primary School

TOLLAND, CONNECTICUT

This is the first school project of its kind in the State of Connecticut addressing crumbling foundations.



The situation at Birch Grove began when the Board of Education noticed cracks in the concrete. The district hired an engineering firm to test the concrete and a report delivered to town leaders said the school foundation had substantial cracking from the presence of pyrrhotite in the concrete and should not be occupied in the coming school year. The town then retained the services of JCJ Architecture to renovate the 500-student PreK-2 Primary School.

This is the first school project of its kind in the State of Connecticut addressing crumbling foundations, and the JCJ team reacted quickly to collaborate with both the Town of Tolland and OSCG&R to achieve a fast and successful referendum.

The team designed a replacement modular school along with site circulation and amenities on the same site as the existing Birch Grove School. The effort continued with the demolition of the existing school and the Renovate-as-New school design was completed in December 2019 with construction and occupancy 19 months later in August of 2021.

The state agreed to pay 89 percent of the cost to rebuild Tolland's Birch Grove Primary School after it was discovered the building had a crumbling foundation.

85,000 sf
NEW CONSTRUCTION

509 Students
GRADES PREK-2

\$40.3 Million
CONSTRUCTION COST

2021
COMPLETION

Revisiting

A PREVIOUS PROJECT



SAXE MIDDLE SCHOOL
NEW CANAAN, CONNECTICUT

JCJ ARCHITECTURE



Saxe Middle School Auditorium and Classrooms

NEW CANAAN, CONNECTICUT



The addition and renovations were the first major changes to the school since JCJ renovated the 1950s-era junior high school in 1999.

In 2015, JCJ Architecture was selected to renovate the 58 year-old auditorium in addition to a two-story classroom addition on the northwest corner of the Saxe Middle School Campus, providing 12 new classrooms, 'right-sizing' the overcrowded music rooms, and adding storage for the auditorium and music instruments.

The addition and renovations were the first major changes to the school since JCJ renovated the 1950s-era junior high school to the needs of middle school teaming in 1999, where new and existing learning areas were re-organized and linked by multiple newly developed informal gathering spaces, and a student commons was developed to provide areas for events and large gatherings.

The Saxe Middle School auditorium hadn't been renovated since it was built in 1957 and with every student in the school required to take art and

music, expanding the art and music rooms was a crucial part of the project. The JCJ team revamped the auditorium with new acoustics, new lighting and refurbished seats, and added a new two-story wing to the school, which is now home to STEM, art and science classrooms. The creation of the wing allows the music classrooms to expand to fit the growing number of students to fulfill their band, chorus or orchestra requirement. The old music classrooms are now practice and music technology rooms, while many of the former art classrooms have been enlarged. The band room went from 1,200 to 2,000 square feet of space, now accommodating 150 students.

While improvements were ongoing, students shuffled back and forth between the spaces — using the old music rooms while the auditorium was renovated and then practicing in the auditorium during the expansion of the music rooms.

25,167 sf
RENOVATION

26,206 sf
NEW CONSTRUCTION

1,200 Students
GRADES 6 – 8

\$18.7 Million
PROJECT COST

2018
COMPLETION

JCJARCHITECTURE

Providing
HANDS-ON, REAL
WORLD EXPERIENCES

**CONNECTICUT RIVER ACADEMY
MANUFACTURING ANNEX**
GOODWIN UNIVERSITY
EAST HARTFORD, CONNECTICUT

JCJ ARCHITECTURE



Connecticut River Academy Manufacturing Annex
 Goodwin University
 EAST HARTFORD, CONNECTICUT



The building was designed to provide a mature and career-oriented environment that would encourage students to explore focused pathways within their interest areas and future college careers.

JCJ Architecture was engaged by Goodwin University to provide full design services for a new Manufacturing Annex Building to serve students at the Connecticut River Academy (CTRA) High School. Located on Goodwin’s East Hartford Campus, the CTRA is a technology-oriented magnet school that supports hands-on learning and an environmental science and advanced manufacturing curriculum.

Functioning as an extension of Goodwin’s Advanced Manufacturing and Technology program, the Annex is a new 20,000 sf building that provides students with a variety of real world experiences in a range of technical and manufacturing disciplines. The building’s centerpiece is the glass enclosed “make-nasium” with 10 project centers, providing flexible and adaptable spaces for students to explore a

variety of disciplines in an open, integrated and technology-rich environment. The Annex provides space for students to receive advanced instruction from Goodwin University faculty and to earn advance college credits while still in high school.

The new building consists of administrative space, a formal presentation Space with tiered seating and state of the art sound and visual technology, CAD Lab, and shop space, aka the “make-nasium” which is the core of the program and contains 10 Project Centers which comprise the Advanced Manufacturing Program: Energy Technology (solar, wind, piezoelectric); Programming; Robotics and Automation; Sensors and Actuator Technology; CNC – Woodworking; Metal Fabrication; Welding; Digital Electronics; Textile/Fabrics/Crafts/ Ceramics; Plastics/Composites and Finishing.

19,913 sf
 NEW CONSTRUCTION

454 Students
 GRADES 9 – 12

\$10.5 Million
 PROJECT COST

2019
 COMPLETION



FLORENCE GRIFFITH JOYNER ELEMENTARY



San Diego Unified School District SAN DIEGO, CALIFORNIA

JCJ Architecture has been providing full architectural and engineering services for the San Diego Unified School District (SDUSD) since acquiring the firm of Wheeler Wimer Blackman (WWB) in 2005. Prior to acquisition, WWB worked with SDUSD continuously since 1975 on a variety of projects, from design of new schools and small classroom buildings to full and partial school modernization projects.

The second largest school district in California, SDUSD is made up of 113 elementary schools, 24 middle schools, 4 atypical schools, 10 alternative schools, 27 high schools and 25 charter schools. In an effort to provide a quality school in every neighborhood, the District sought bonding in 2008 and 2012 for funds to comprehensively repair, renovate and revitalize District schools. On Nov. 4, 2008 and again on Nov. 6, 2012, voters of San Diego

County respectively approved Proposition S (Prop. S) in the amount of \$2.1 billion and Proposition Z (Prop. Z) in the amount of \$2.8 billion. Bond projects include classroom technology, safety and security upgrades, ADA upgrades, new/renovated facilities for College, Career and Technical Education, temporary classrooms replaced by permanent classrooms, air conditioning, ADA improvements to athletic facilities, turf fields, and other capital improvements at schools throughout the District. As a firm on the SDUSD prequalified vendor list, JCJ has been working under Prop S and Z funding on a variety of new construction and modernizations projects. Three of the most recent architectural as-needed services contracts include the HVAC 2000 Modernization Project, i21 Technology Improvements, and Facilities Architectural Services Contract for construction and major repair and modernization projects program.



ANGIER ELEMENTARY SCHOOL



HAMILTON ELEMENTARY SCHOOL



WEGFORTH ELEMENTARY SCHOOL



MCKINLEY ELEMENTARY SCHOOL



WEBSTER ACADEMY OF SCIENCE



CADMAN ELEMENTARY SCHOOL

JCJ was hand selected by the San Diego Unified School District to pioneer the design for technology upgrades for 7,000 classrooms throughout the District.

The HVAC 2000 Modernization contract is a \$12 million project scope including the modernization and design of new air conditioning systems for existing permanent and portable classrooms. In addition, a combination of rooftop packaged units and split systems were used, utilizing standard SDUSD "template" details and specifications as this retrofit project is being installed at approximately seventy (70) school sites across the District.

The i21 Technology Improvements contract is a 5-year, \$23 million program. Due to continually exhibiting high performance work on its schools, JCJ was hand selected by the San Diego Unified School District to pioneer the design for technology upgrades for 7,000 classrooms throughout the District. The District's goal is to transform the learning environment in each of its 7,000 classrooms

with a suite of new technology tools including the interconnected use of mobile computing, audio, visual and formative assessment technologies, providing for an optimal technology-rich teaching and learning environment.

Working with the Facilities Architectural Services for construction and major repair and modernization projects program, scopes of work range from minor repair and renovation, to building replacement, to new construction. The services included program assessment, design task force, schematic design, design development, construction documents, regulatory review administration, bid administration, construction administration, and project close-out.

100+ Schools
ACROSS THE DISTRICT

135,000
Students
GRADES PRE K - 12

46 Years
ONGOING CONTRACTS



CULTURAL/MUSEUM EXPERIENCE

CHOCTAW NATION CULTURAL CENTER, DURANT, OK

Celebrate AND SHARE CULTURE

"A GREATER AND MORE MODERN SPACE WILL
ALLOW US TO SHARE OUR CULTURE AND THE
CULTURE OF ALL NATIVE PEOPLES. THEIR ISSUES
ARE OUR ISSUES, AND OUR ISSUES THEIRS."

— CULTURAL MUSEUM BOARD
CHAIRWOMAN MILLIE BROWNE

AGUA CALIENTE
CULTURAL MUSEUM & SPA AT SÉC-HE
PALM SPRINGS, CALIFORNIA

JCJARCHITECTURE



Agua Caliente Cultural Museum & Spa at Séc-he
PALM SPRINGS, CALIFORNIA



"We want to share our culture with visitors through our authentic voice. This is our story, in our own voice. We are here today just like we have been since time immemorial."

— TRIBAL CHAIRMAN REID D. MILANOVICH

Situated at the heart of downtown Palm Springs, the 5.8-acre Agua Caliente Cultural Plaza is both owned and operated by the Tribe. It serves as a vibrant celebration of the history, culture, and traditions of the Agua Caliente people. In a harmonious union, the recently unveiled Spa at Séc-he pays homage to the Tribe's ancient Agua Caliente Hot Mineral Spring, while the Cultural Museum offers an extraordinary opportunity to share the Tribe's rich heritage with all visitors.

Drawing inspiration from Agua Caliente traditions, such as basket weaving and pottery (known as ollas), as well as elements found in the natural landscape, including the desert terrain and the Indian Canyons

with their unique features like rock formations, the winding Andreas Canyon stream, and the native Washingtonia filifera palm trees, both the cultural center and the spa are thoughtfully designed.

Expressing this vision, Tribal Chairman Reid D. Milanovich remarked, "Each federally recognized tribe throughout this country has a distinct culture that includes traditions, language, historic clothing, and housing styles as well as historical food and medicine preparations. We want to share our culture with visitors through our authentic voice. This is our story, in our own voice. We are here today just like we have been since time immemorial."

THE SPA AT
Séc-he

5.8
ACRES

48,000 sf
MUSEUM

40,000 sf
SPA

2023
COMPLETION

Curry Spa
CONSULTING

Pacific Studios
EXHIBITION DESIGNER

JCJARCHITECTURE



"THIS IS OUR NEW ROUNDHOUSE. THE PLACE TO SHARE HISTORY, KNOWLEDGE, AND CULTURE."

JCJ Architecture's design for the spa and cultural center embodies the values and enduring dedication of the Agua Caliente Tribe. By integrating the Agua Caliente Cultural Museum with the new Spa and Bathhouse, the design honors the deep-rooted tradition of healing mineral water experiences.

Julia Bussinger, Director of the Agua Caliente Cultural Museum, described the project as "...a state-of-the-art facility with a basket-starter shape incorporated in its architectural design and a dome-element in the Grand Lobby."

Agua Caliente Cultural Museum & Spa at Séc-he

PALM SPRINGS, CALIFORNIA





Agua Caliente Cultural Museum & Spa at Séc-he

PALM SPRINGS, CALIFORNIA



The heart of the development is the Agua Caliente Hot Mineral Spring, originally named Sec he, resonating with the sound of boiling water, serving as a poignant focal point. It stands as a symbol, inviting Tribal Members and visitors to embrace community, history, and pay homage to the life-affirming waters that shaped the Palm Springs region.

Spanning approximately 40,000 square feet, the Spa is a testament to the ancient healing waters of Agua Caliente Hot Mineral Spring. It houses treatment rooms, men and women's bathhouses, a tranquility garden, a salon, fitness center, and outdoor mineral pools. The water from the Agua Caliente Hot Mineral Spring, estimated to be over 12,000 years old, holds a mineral composition found nowhere else in the world, rendering it truly exceptional. For over a century, the Tribe has generously shared these healing waters with visitors, solidifying their heritage and commitment to well-being.

TIME
TIME MAGAZINE,
WORLD'S GREATEST
PLACES OF 2024



GOOD HOUSEKEEPING
2024, BEAUTY AWARD



TOP 100 USA SPAS,
SPAS OF AMERICA,
2023 & 2024



2024 USA TODAY,
10 BEST,
BEST HOT SPRINGS

JCJARCHITECTURE

A Window

THROUGH WHICH THE WORLD
WILL LEARN ABOUT THE
CHOCTAW NATION

CHAHTA NOWVT AYA JOURNEY CENTER

CHOCTAW NATION CULTURAL CENTER

DURANT, OKLAHOMA

JCJ ARCHITECTURE



Chahta Nowvt Aya Journey Center Choctaw Nation Cultural Center

DURANT, OKLAHOMA

A cultural journey with a primary vision to create a window through which the world will learn about the Nation.



Uniquely positioned as the 3rd largest Native Nation in the US, with over 200,000 members, nearly 11,000 square miles, and a 13,000+ year oral history, the design, timeline and budget for the Choctaw Nation Cultural Center was defined by the absolute necessity to include thousands of Tribal Member's stories and input. The Choctaw Nation began a multi-year research and development project in 2012 that included input from thousands of Tribal Members, as well as a core team of Tribal Members who could further define and shape the Nation's rich history. Following this research, JCJ Architecture provided full design services for the creation of the new Choctaw Cultural Center, a cultural journey with a primary vision to create a window through which the world will learn about the Nation.

The design of the cultural center allows visitors to create their own vision through total emotional immersion. Throughout the design process, JCJ worked alongside the Choctaw Nation to preserve their goals of: building a place for 'Choctaw to be Choctaw'; providing a welcoming, inclusive and interesting center, a place that is alive and interactive; and creating spaces for ceremonies and communal gatherings. To compliment these efforts, community members poured their heart and soul into the exhibits. 40+ community members provided a multitude of content, including: physical life-casts; traditional art, artifacts and representations; audio and video recordings; and storytelling around every corner.

95,650 sf
NEW CONSTRUCTION

2020
COMPLETION

ATM
Association of Tribal Archives, Libraries, & Museums

**2020 ATALM AWARD
FOR TRIBAL
ARCHIVES, LIBRARIES
AND MUSEUMS**

JCJARCHITECTURE



Chahta Nowvt Aya Journey Center Choctaw Nation Cultural Center

DURANT, OKLAHOMA



The physical approach to the Cultural Center provides a significant entry point, embracing guests with architectural details representative of the Nation's original three (3) Districts (Moshulatubbee, Pushmataha, and Apukshunnubbee). Guests are also welcomed with direct design reference to the traditional Choctaw home, the 'Chukka', with central fireplace opening to the heavens, paired with symbolic diamond openings, traditional basketweaving details in the brickwork, and guiding principles of 'faith, family and culture'.

Traveling through to the exhibit spaces, each of the Nation's existing 12 districts are represented through written and oral stories as well as photos, historic dress, tools and art/artifacts.





LANDSCAPE 1: "OUR FIRST ANCESTORS"



LANDSCAPE 2: "SHUMO TAKALI"

After exploring the 12 Districts, the path of circulation flows through an orientation gallery and then four Choctaw Landscapes:

LANDSCAPE 1: "OUR FIRST ANCESTORS" where visitors explore the Origin of the Choctaw People through archeology and history. 40+ Native Artists created this landscape, inclusive of life-casts, interactive 3D maps and digital exhibits and audio/video components.

LANDSCAPE 2: "SHUMO TAKALI" depicts early Choctaw living through tree species, screens, life-casts, and realistic representations of native plants and animals.

LANDSCAPE 3: "TIMELINE" is an interactive exhibit where guests can read and listen to a full Choctaw history, with details on the Trail of Tears, through printed materials, artifacts, and a digital, touch-sensitive storytelling rooms.

LANDSCAPE 4: "OKLAHOMA" is a modern exhibit depicting recent Choctaw history with replicas of modern homes, school buildings and a room to honor Choctaw Warriors.

Chahta Nowvt Aya Journey Center Choctaw Nation Cultural Center

DURANT, OKLAHOMA



LANDSCAPE 3: "TIMELINE"

a new process of formalizing Nation-to-Nation relationships through treaty.

For decades, we negotiated rights mutually with the French, Spanish, English, other Tribes, and the United States.

balance of power, we were progressively forced to relinquish our homeland.

foundation from which to rebuild our Nation in the west.

MOBILE ANUMPA VLHPISA

TREATY OF MOBILE, 1765

Formalizing our nation-to-nation relationship with the British Empire
The Choctaw people first met the French in 1701. Our two powers quickly became allies, with the Choctaw providing food and military protection, and the French providing manufactured goods. Britain, France's enemy, had sent costly raids into Choctaw country, had actively



We told the English that we would share part of our land—that they had to pay all the people who would be affected by this.
Our goal in the negotiation was to create a mutually beneficial, long-lasting relationship with the British as allies and neighbors.
The written text of the treaty says that we gave the British our land—something we never agreed to. It promises that the British would stop their people from acquiring in our territory—a commitment they never honored.



LANDSCAPE 4: "OKLAHOMA"



Chahta Nowvt Aya Journey Center Choctaw Nation Cultural Center

DURANT, OKLAHOMA



Additional program components include: teaching classrooms for cooking and art workshops; a changing exhibit gallery; children's exhibits with a larger than life turtle that serves as a reading room; prefunction and event spaces; a multi-use theater; retail store; Champuli Café, serving traditional Choctaw cuisine; a full archive/repository with blessing room; and administrative offices. Outdoor amenities include a living village for artisan demonstrations, traditional home replicas, a sacred mound replica, stickball fields, a dance circle/pow wow area, trails, and additional dining/picnic space.

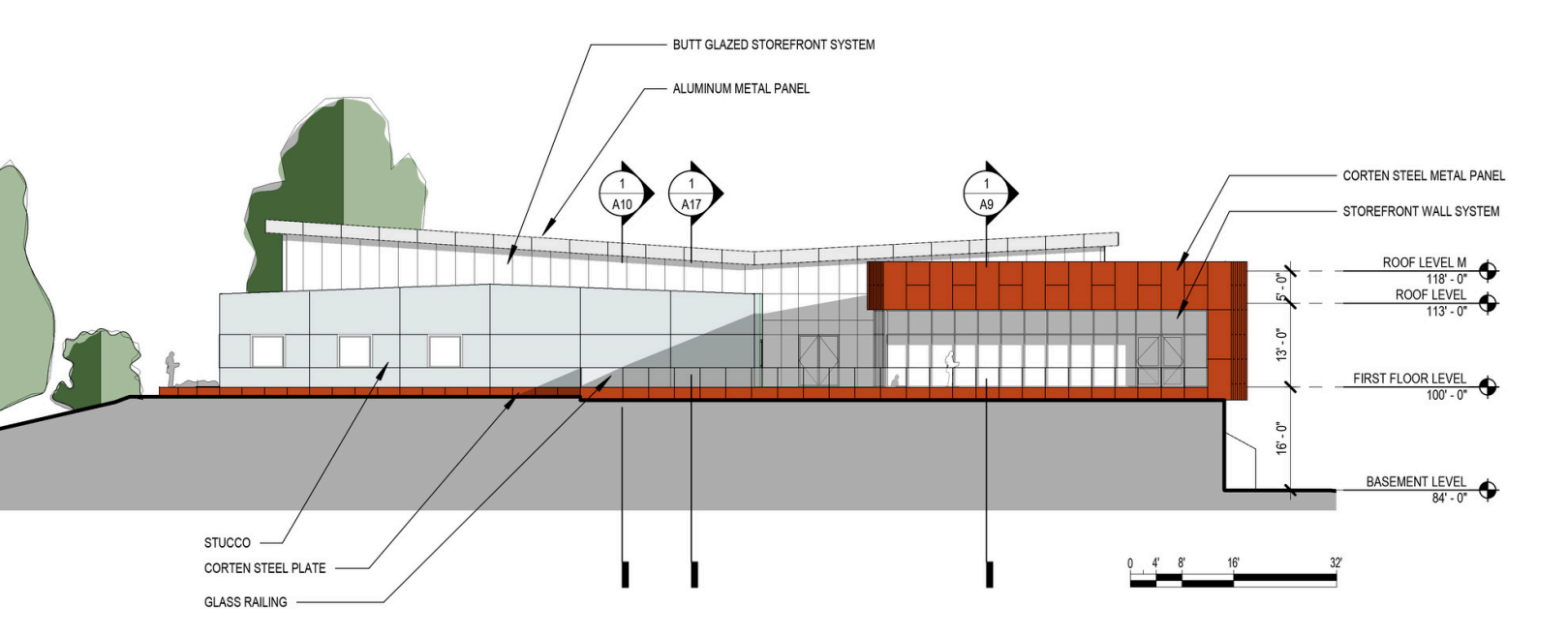


Integrating
STONE
AND STORAGE

**CULTURAL REPOSITORY, MUSEUM
AND CULTURAL CENTER**

PROMINENT TRIBE IN SOUTHERN CALIFORNIA

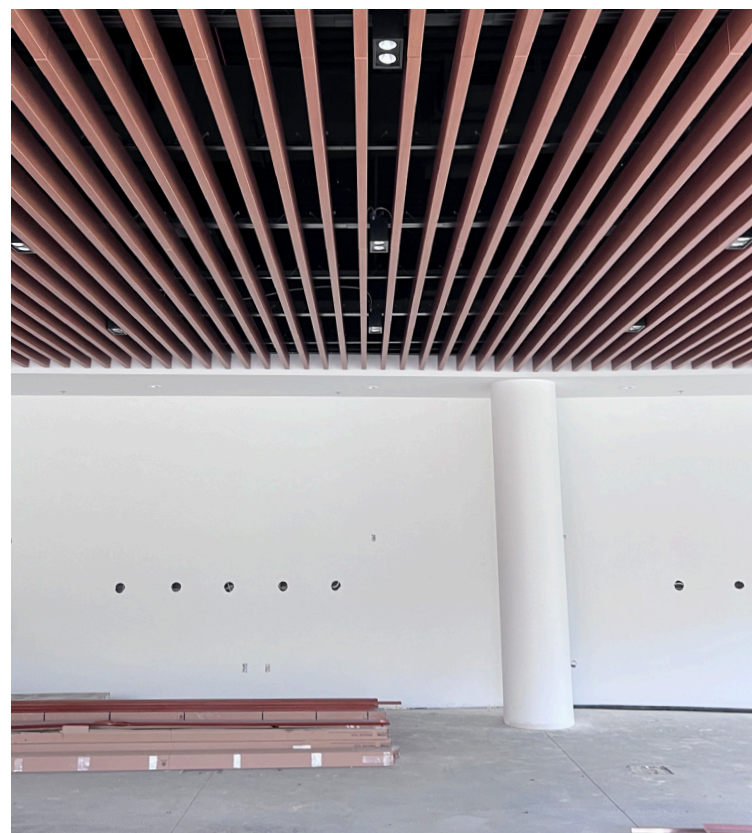
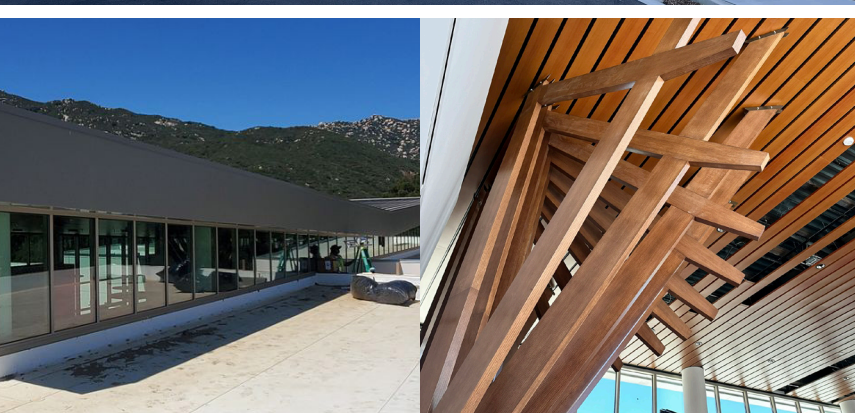
JCJ ARCHITECTURE



Cultural Repository, Museum and Cultural Center

PROMINENT TRIBE IN SOUTHERN CALIFORNIA

The museum, cultural center and repository were developed to embrace the Nations gifts of 'stone' and 'storage'.



The Pechanga Repository is thoughtfully positioned to face a mountain range of deep symbolic significance to the Tribe and is constructed using materials chosen for their cultural and environmental meaning. The building design is organized into three distinct program areas: staff-focused spaces that include offices, meeting rooms, and work areas; publicly accessible spaces that host multipurpose gatherings and events; and a dedicated repository building that houses secure vaults, expansion zones, and specialized rooms for the storage, preparation, and presentation of museum archives.

As Tribal Members enter the building, they are welcomed by a soaring canopy, expansive views through the structure, river rock beneath their feet, and an abstracted Oak Tree at reception. The lobby is designed to be flexible, easily transforming into an event space when needed.

Clerestory windows fill the main level with soft, diffused daylight, creating ideal working conditions while reinforcing the connection to the natural environment. The lobby, which also features space for displaying Tribal artwork, acts as a threshold—guiding visitors toward the more private areas of the building. At the heart of the administrative program is a central conference room, encircled by individual offices to promote collaboration while maintaining privacy and focus.

Purposeful in function and rich in meaning, the Pechanga Repository is a facility that not only addresses the immediate needs of the Tribe but also honors and celebrates its culture, community, and identity.

4,500
SQUARE FEET
STAFF/OFFICE

8,500
SQUARE FEET
PUBLIC/GATHERING

9,100
SQUARE FEET
REPOSITORY

Confidential
PROJECT COST

2025
COMPLETION

JCJARCHITECTURE

Remembering

THE 1921 TULSA MASSACRE & BLACK WALL STREET

Greenwood Cultural Center

GREENWOOD CULTURAL CENTER

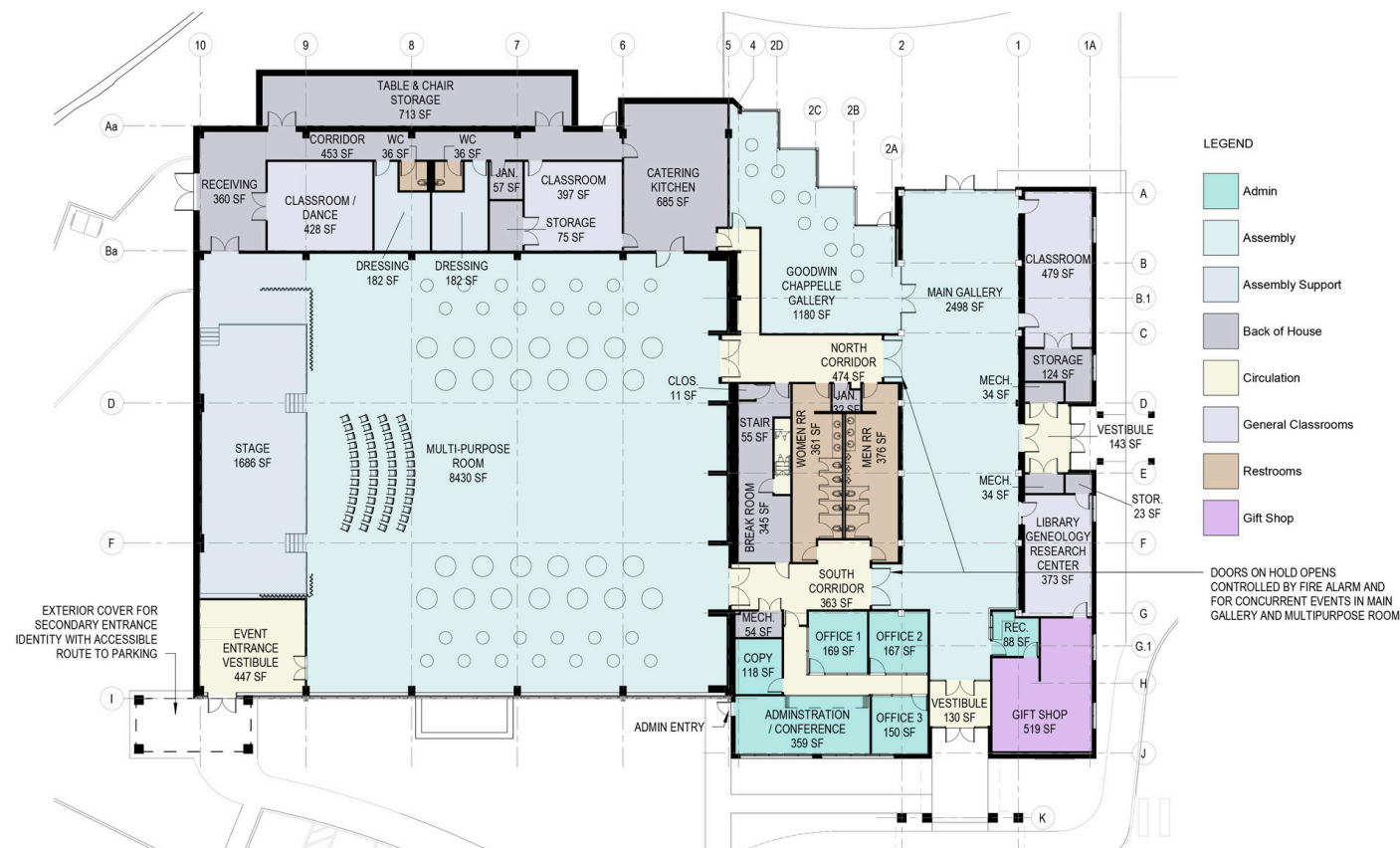
TULSA, OKLAHOMA

JCJ ARCHITECTURE



Greenwood Cultural Center

TULSA, OKLAHOMA



The GCC mission is its essence: promoting, preserving, and celebrating African American culture and heritage.

The Tulsa Race Massacre took place on May 31 and June 1, 1921, when mobs of white residents, many of them deputized and given weapons by city officials, attacked Black residents and businesses of the Greenwood District in Tulsa, Oklahoma. It has been called "the single worst incident of racial violence in American history." The attack, carried out on the ground and from private aircraft, destroyed more than 35 square blocks of the district—at that time the wealthiest Black community in the United States, known as "Black Wall Street."

The GCC mission is its essence: promoting, preserving, and celebrating African American culture and heritage. The GCC offers empathy and compassion for the community as we navigate challenging times of racial inequity and injustice, including investigations into mass grave sites and a renewed demand for reparations for the survivors and descendants on the 1921 Tulsa Race Massacre.

JCJ Architecture has teamed with Moody Nolan, (AIA 2021 Architecture Firm of the Year), to provide unified services to the City of Tulsa. Moody Nolan, a Minority Owned Business with a nation-wide presence, brings extensive personal and professional experience in African-American history and black culture to the Greenwood Cultural Center.

In March 2022, JCJ Architecture and Moody Nolan Architects held an on-site Visioning & Programming session with Greenwood Cultural Center Staff and Stakeholders along with representatives from the City of Tulsa. JCJ Architecture and the consultant team has also performed an Existing Facility Evaluation Survey.

We look forward to continuing this collaboration to bring the Greenwood Community Center to the forefront as a community resource for learning, growth, healing and gathering.

38,000 sf
RENOVATION

\$5.3 Million (est)
PROJECT COST

2027 (est)
COMPLETION

JCJARCHITECTURE



CHOCTAW NATION CULTURAL CENTER, DURANT, OK



89 Years of Practice

ESTABLISHED IN 1936; MULTI-GENERATIONAL COLLECTIVE INTELLIGENCE



100% Employee Owned

ENTREPRENEURIAL CULTURE | UNWAVERING DEDICATION TO CLIENTS, PARTNERS & COLLEAGUES



Seven Offices

NATIONAL COVERAGE | BOSTON, HARTFORD, LAS VEGAS, NEW YORK, PHOENIX, SAN DIEGO, TULSA



Specialists in Design & Documentation

SKILLED AT CREATIVE DESIGN, TECHNICAL DOCUMENTATION AND DELIVERY

JCJARCHITECTURE



Balanced Project Approach

ADDRESSES OPERATIONAL EFFICIENCIES & THE GUEST EXPERIENCE



Fast-Track Delivery Expertise

CONSENSUS BUILDING & EARLY ENGAGEMENT; EFFICIENT PROCESSES



Focus on Quality & Constructability

EFFICIENCY AND ACCURACY IN RFI RESPONSES, SUBMITTAL REVIEW & PUNCH LISTS



Align Project Vision with Authentic Experiences

HEIGHTENED GUEST EXPERIENCES THROUGH SCALE, DISCOVERY, IDENTITY

Scott Celella, CSI, LEED AP

PRESIDENT

SCELELLA@JCJ.COM

T: 860.240.9306

Jeanne M. Muscolino, NCIDQ

PRINCIPAL | HOSPITALITY MARKETS LEADER

JMUSCOLINO@JCJ.COM

T: 860.559.8243

JCJARCHITECTURE

AN EMPLOYEE OWNED COMPANY

TEL 877.389.9395

BOSTON
HARTFORD
LAS VEGAS

JCJ.COM

NEW YORK
PHOENIX
SAN DIEGO
TULSA